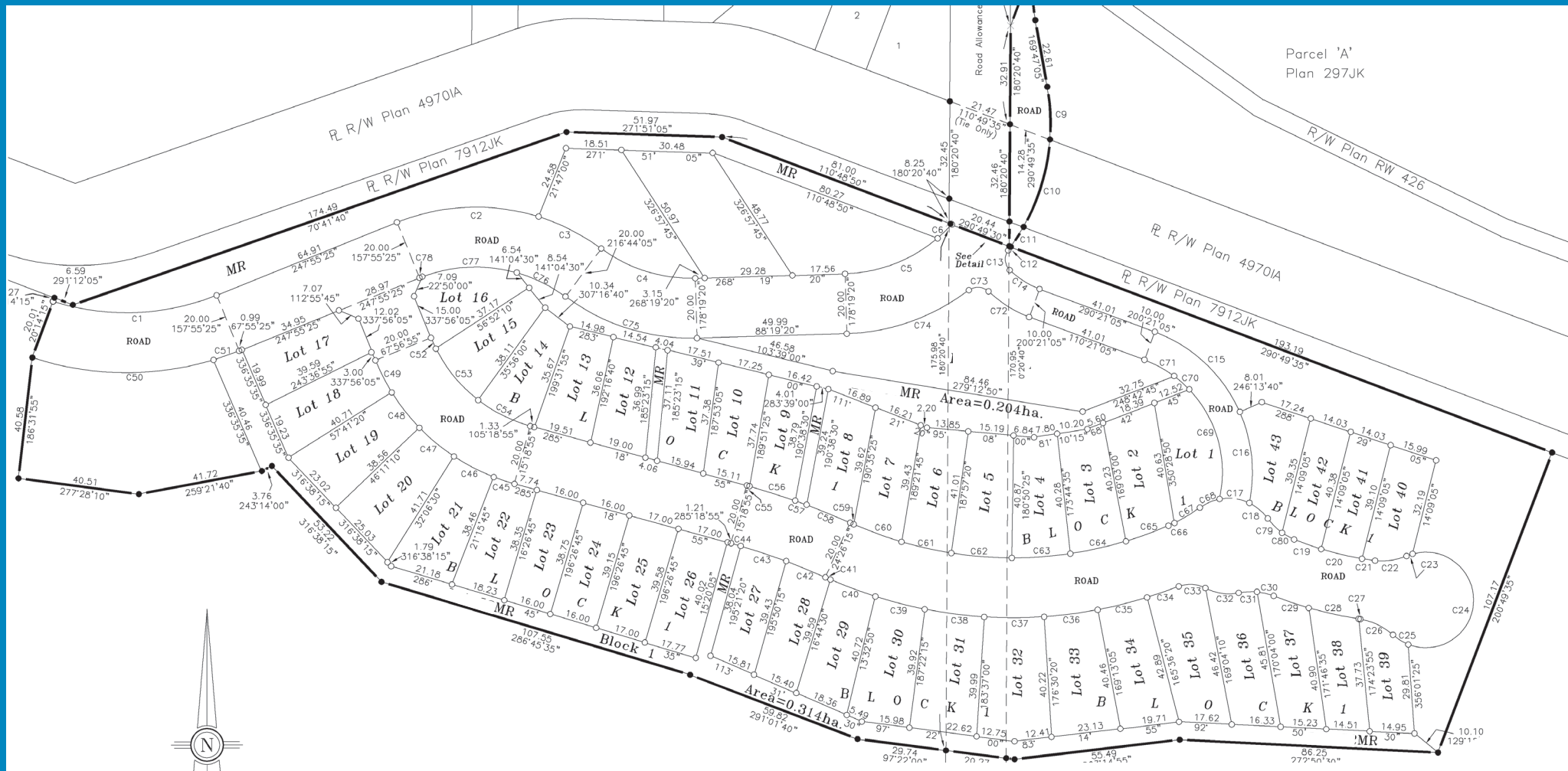


For Pricing and Availability Call Lowry Toombs at (403) 563-1222



N.E. 1/4 Sec. 34-7-4-W5M.

CURVE TABLE				
No.	Radius	Arc	Chord	Delta
C1	80.00	55.72	54.60	39°54'33"
C2	70.00	48.57	47.32	39°30'43"
C3	70.00	23.58	23.47	1°18'01"
C4	50.00	33.52	32.90	38°24'46"
C5	50.00	33.72	33.08	38°38'08"
C6	50.00	6.63	6.62	7°35'45"
C7	50.00	6.44	6.43	7°22'31"
C8	50.00	20.86	20.71	23°34'00"
C9	70.00	17.64	17.60	14°26'30"
C10	70.00	30.73	30.48	22°09'04"
C11	70.00	7.80	7.80	6°7'44"
C12	70.00	1.44	1.44	1°10'47"
C13	5.00	7.21	6.80	62°37'45"
C14	28.30	11.87	11.79	24°10'23"
C15	50.00	40.03	38.97	45°52'54"
C16	50.00	31.08	30.57	35°35'45"
C17	10.00	10.91	10.94	56°13'10"
C18	18.00	8.13	8.04	29°06'54"
C19	100.00	9.60	9.59	5°14'33"
C20	100.00	14.60	13.89	7°38'28"
C21	100.00	4.41	4.41	2°24'25"
C22	20.00	10.74	10.61	30°45'42"
C23	18.00	2.13	2.13	7°37'08"
C24	18.00	60.77	30.99	21°28'10"
C25	16.00	6.08	6.04	21°46'38"
C26	20.00	12.25	12.08	35°06'14"
C27	120.00	9.58	9.58	0°16'02"
C28	120.00	17.08	17.05	7°49'15"
C29	120.00	12.37	12.38	5°40'08"
C30	20.00	5.78	5.74	18°30'54"
C31	20.00	6.14	6.12	17°35'41"
C32	18.00	11.46	11.22	41°02'24"
C33	15.00	9.19	8.89	34°52'20"
C34	150.00	11.22	11.22	41°52'41"
C35	150.00	17.00	16.99	6°26'57"
C36	150.00	18.00	18.00	0°50'00"
C37	150.00	20.00	20.00	7°35'37"
C38	150.00	20.00	20.00	7°35'39"
C39	150.00	17.00	17.00	8°27'12"

CURVE TABLE				
No.	Radius	Arc	Chord	Delta
C40	151.00	18.00	18.00	6°04'25"
C41	151.00	1.85	1.85	0°42'06"
C42	210.45	14.15	14.15	3°51'12"
C43	210.45	16.00	16.00	4°21'26"
C44	210.45	3.35	3.35	0°54'42"
C45	70.00	7.27	7.27	5°56'58"
C46	70.00	15.00	14.67	12°16'42"
C47	70.00	15.01	14.98	12°17'00"
C48	70.00	15.00	14.98	12°16'58"
C49	70.00	12.00	12.01	8°50'28"
C50	100.00	61.45	60.49	35°32'37"
C51	100.00	9.04	9.04	5°10'49"
C52	50.00	3.94	3.94	4°31'09"
C53	50.00	22.44	22.25	25°24'25"
C54	50.00	19.55	19.42	22°24'05"
C55	230.45	0.89	0.89	0°13'17"
C56	230.45	16.00	16.00	3°58'44"
C57	230.45	4.05	4.05	1°00'29"
C58	230.45	15.74	15.74	3°54'51"
C59	131.00	1.98	1.98	0°33'02"
C60	131.00	17.00	17.00	7°28'31"
C61	131.00	17.00	17.00	7°28'25"
C62	131.00	20.29	20.27	8°52'21"
C63	131.00	19.68	19.56	8°33'50"
C64	131.00	19.02	19.01	8°18'13"
C65	131.00	15.12	15.11	6°38'43"
C66	200.00	2.22	2.22	2°28'35"
C67	52.00	9.89	9.89	10°54'38"
C68	18.00	7.25	7.19	25°58'13"
C69	40.00	39.54	37.95	16°45'45"
C70	40.00	6.76	6.75	9°40'58"
C71	40.00	11.33	11.29	16°17'29"
C72	18.30	16.18	16.04	24°10'25"
C73	5.00	7.17	6.57	82°10'52"
C74	70.00	43.98	43.24	32°58'22"
C75	70.00	46.13	46.08	28°31'45"
C76	50.00	18.18	18.08	20°50'18"
C77	50.00	32.11	31.56	36°47'49"
C78	50.00	1.03	1.03	1°10'37"
C79	20.00	6.78	6.74	19°24'41"
C80	20.00	4.60	4.59	13°11'04"

SOUTHMORE SUBDIVISION PLAN